

# BRICK SLIP FEATURE LINTELS



- One piece prefabricated unit, with patented brick slip adhesion system which forms a permanent mechanical bond ensuring maximum brick retention.



**FREE Brick Feature  
Lintel design service**

- Manufactured bespoke to order ensuring that each individual unit is customized to the unique size, shape and aesthetic requirements of the project.

- Enables complex brickwork detail to be carried out in a controlled factory environment.

- Optional brickclad soffit, centre stone feature and insulation available.

**Free Scheduling  
Service Available**

**Please provide the counter staff with your plans for  
your FREE lintel scheduling service**

LINTEL HOTLINE

**01633 486486**

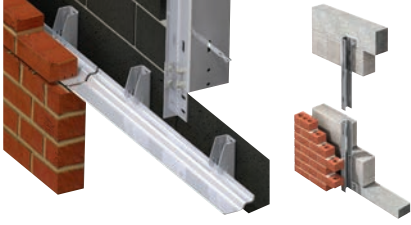
Email: [sales@iglintels.com](mailto:sales@iglintels.com)

**IG Lintels**

Avondale Road, Cwmbran, Gwent, NP44 1XY

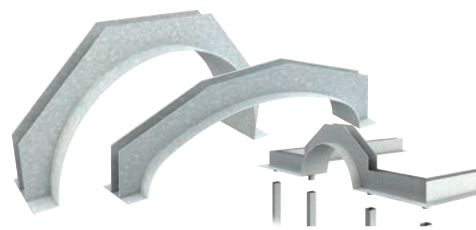
T: +44 (0)1633 486486 F: +44 (0)1633 486465

**[www.iglintels.com](http://www.iglintels.com)**



## MASONRY SUPPORT & WINDPOST SYSTEMS

IG produce an innovative range of masonry support and windpost systems backed by bespoke design and industry leading technical support.



## SPECIAL LINTELS

IG offer a complete custom design service to ensure your project has the best lintel for the job. Our technical expertise is renowned for value engineering the optimum solution.



## STANDARD LINTELS

IG produce a wide range of standard galvanised steel and stainless steel lintels. All IG standard lintels satisfy the thermal performance requirements of all UK building regulations.



## HI-THERM

IG has redefined lintel performance with Hi-Therm, designed to exceed the thermal requirements in forthcoming building regulations. Hi-Therm is supported by an advanced technical service package.



## STAINLESS STEEL

IG's full range of lintels is also available in stainless steel, providing the same high quality and performance features as our standard galvanised lintels.



## CAVITY TRAYS

The IG Cavity Tray presents a lightweight, simple to install and long-lasting solution to preventing damp from penetrating below the roof line.