

Keyfix

Non-Combustible Stainless Steel Cavity Tray Systems



The Keyfix NC range provides Document B compliant, Class A1 non-combustible cavity protection in buildings utilizing steel frame systems.

Suitable for use

- Over masonry supports
- Over soffit systems
- Over openings with a Keyfix NCCTL Cavity Lintel Tray
- Over other elements which cross the cavity
- Suits cavity widths 100-225mm as standard

Compliance

- Complies with NHBC requirements
- Complies with Document B fire safety
- Complies with relevant Building Regulations

Key Features

- Grade 304 Austenitic Stainless Steel
- Designed to maximise the release of water
- No sealants or tapes required
- Self-supporting for ease of installation.
- Full range of tray sizes for laying efficiency
- Preformed internal and external corners
- Integral weep vents
- Indented base to eliminate slip planes

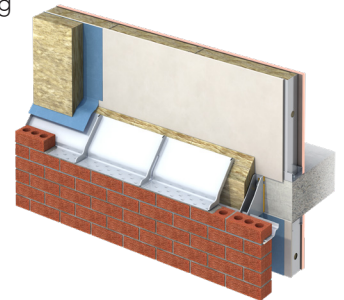
Key Benefits

- Rapid build in the outer leaf
- Easy one person installation process
- No fabrication required on-site
- Modular tray sizing suits all brickwork configurations
- Trays interlock to form watertight joints
- Efficient integration with building membranes, if required
- Non-combustible weep vents
- Easy to specify and order
- 'Specials' available to order

Product Range

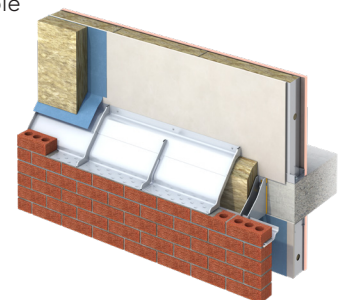
Keyfix Type 1 NCCT-1

One-piece, self-supporting non-combustible stainless steel cavity tray.



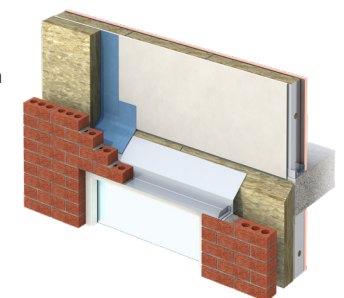
Keyfix Type 2 NCCT-2

Two-piece non-combustible stainless steel cavity tray.



Keyfix Lintel Tray NCCLT

One piece non-combustible structural load bearing single leaf lintel with combined cavity tray for openings up to 2822.5mm



Keyfix

Specification Sheet

Typical specification clauses – Cavity trays

Use this clause to specify Keyfix Type 1 trays or change the product name to Keyfix Type 2 NCCT-2 for projects requiring a mechanical fix to the inner leaf.

NON-COMBUSTIBLE STAINLESS STEEL CAVITY TRAYS

Manufacturer

IG KEYFIX, Ryder Close, Cadley Hill Ind Est, Swadlincote, South Derbyshire, DE11 9EU. Tel 01283 200 157

Keyfix Type 1 NCCT-1

Non-combustible stainless steel cavity trays and preformed corners with integral weep vents and interlocking upstands to form watertight joints without sealants.

Installed as per the manufacturer's installation instructions to ensure a waterproof barrier across the cavity.

Typical specification clause – Cavity Lintel with tray

NON-COMBUSTIBLE STAINLESS STEEL LINTEL WITH COMBINED CAVITY TRAY

Manufacturer

IG KEYFIX, Ryder Close, Cadley Hill Ind Est, Swadlincote, South Derbyshire, DE11 9EU. Tel 01283 200 157


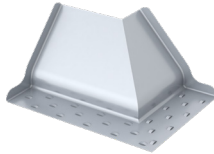

Keyfix NCCLT

Non-combustible structural load bearing single leaf lintel with combined cavity tray manufactured in with integral mechanically fixed watertight stopends.

Installed as per the manufacturer's installation instructions to ensure a waterproof barrier across the cavity.

Ordering details

Please contact the IG technical team for scheduling support. The following table outlines the Keyfix Type 1 components and product codes.

Keyfix Type1 Cavity Tray		Code
	Type 1 tray 1 brick 229mm L	NCCT-1/1
	Type 1 tray 2 brick 454mm L	NCCT-1/2
	Type 1 tray 4 brick 904mm L	NCCT-1/4
	Type 1 tray 6 brick 1354mm L	NCCT-1/6
Keyfix Type1 Cavity Tray Corner		Code
	Internal Left 2 x 1.5 brick	NCCT-1CIL
	Internal Right 1.5 x 2 brick	NCCT-1CIR
	External Left 2 x 1.5 brick	NCCT-1CEL
	External Right 1.5 x 2 brick	NCCT-1CER
Non- combustible weep vent		Code
	Non-combustible weep vent	NCW
Structural Lintel with tray		Code
Contact us for schedules		NCCLT